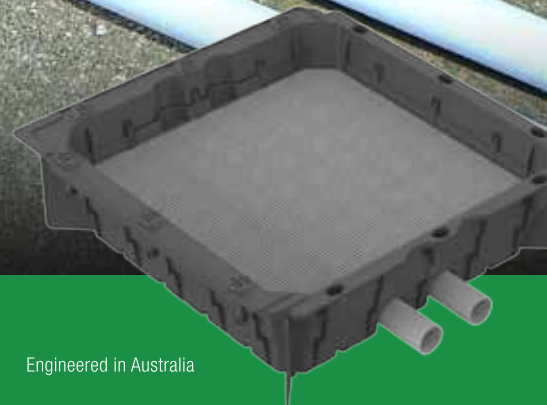


# MEP Tray<sup>®</sup>

Modular Extensive Planting System



**Creating Cities  
Where Urban Meets Nature**



Engineered in Australia

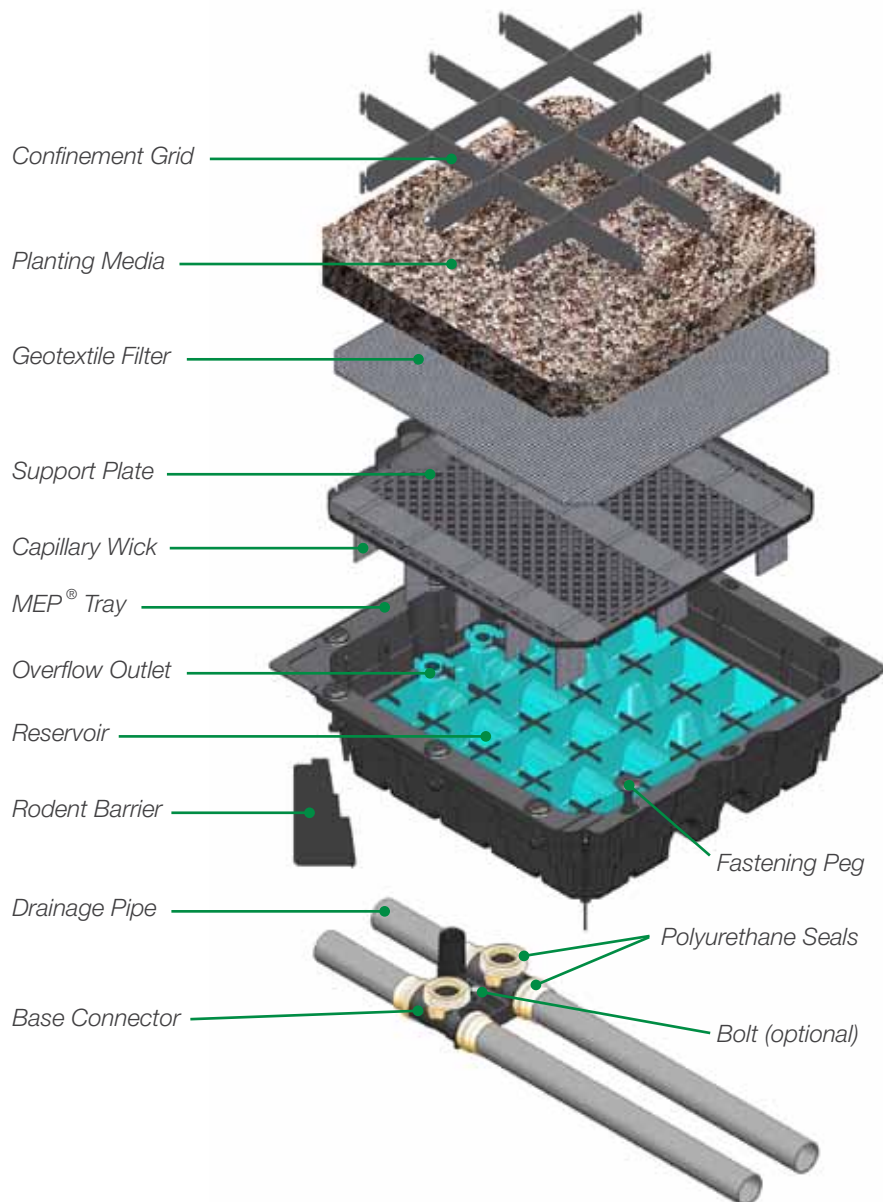
## Our Innovation Your Solution

The Modular Extensive Planting (MEP) Tray has water storage compartments, integrated capillary wicks, and other unique features that provide a quick and simple solution to transform dull conventional roofs into green and beautiful roofs.



# MEP® Tray

Research worldwide has shown that green roofs limit the impact of climate change, underlining the valuable role they play in sustainable design. They reduce heat transmission from rooftops to habitable spaces below, lower ambient temperature, mitigate urban heat island effect, reduce rainwater runoff, and enhance aesthetics.



## About MEP® Tray

The Elmich MEP® Tray (Modular Extensive Planting Tray) system allows quick establishment of extensive green roofs. It is a lightweight and robust planting tray with water storage compartments made from high-strength UV-stabilised polypropylene.

The system includes a support plate with anti-root overflow outlet covers, capillary wicks, geotextile filter, confinement grid, joining and fastening pegs, rodent barriers, base connector, and drainage pipes.

The water reservoir in each MEP® Tray supports long-term plant sustainability with minimal maintenance.

The modular tray design allows sustained plant growth and its light weight facilitates easy creation of desired designs and patterns. Each MEP® Tray, including accessories, saturated planting media, plants and stored water, weighs less than 30 kg.

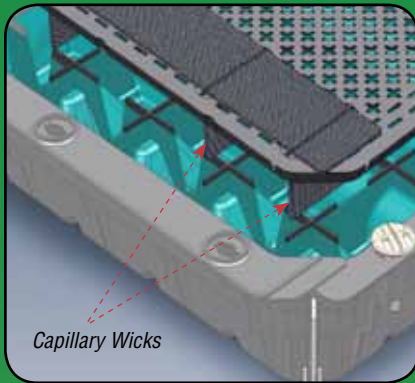
The self-contained MEP® Tray may be pre-planted in a nursery prior to installation to achieve instant greening of rooftops.

MEP® Tray components are manufactured primarily from recycled plastics, supporting all international Green Building Certifications.

# Distinctive Features

## Capillary Wicks

Capillary Wicks in the Support Plate convey water to the geotextile filter and planting media. This also discourages root incursion into the reservoir.



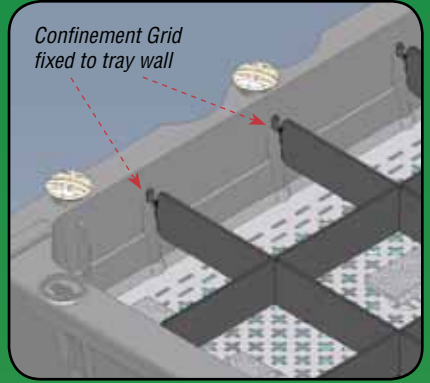
## Placement of Planting Media

The MEP® Tray has a fitted Support Plate for placement of a geotextile filter. Its small apertures stop excess planting media from getting into the reservoir.



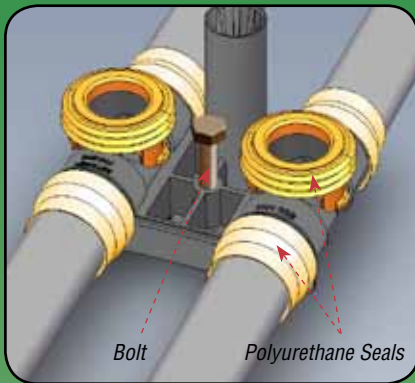
## Erosion Control

A Confinement Grid minimises media spillage from the MEP® Tray. It is attached to the tray to prevent it from being dislodged.



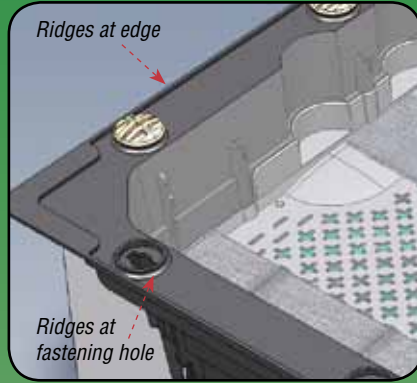
## Securing of Trays

Adjoining MEP® Trays are secured by fastening pegs. Each tray may be bolted to the substrate via the Base Connector for additional security if required.



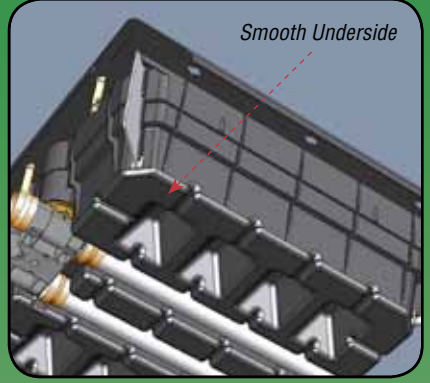
## Water Seepage

Ridges at the edge and around the fastening holes of the MEP® Tray prevent water seepage between adjoining trays, keeping the roof beneath dry.



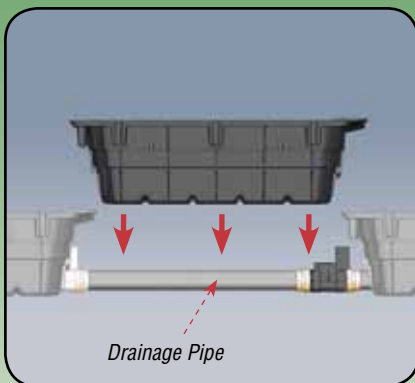
## Non-Intrusive Base

The MEP® Tray has a smooth base without any protrusions allowing it to be placed directly onto the waterproofing membrane without damaging it.



## Independent Drainage

The MEP® Tray utilises an independent drainage system pre-installed beneath the trays. Polyurethane seals used at the joints ensure watertightness.



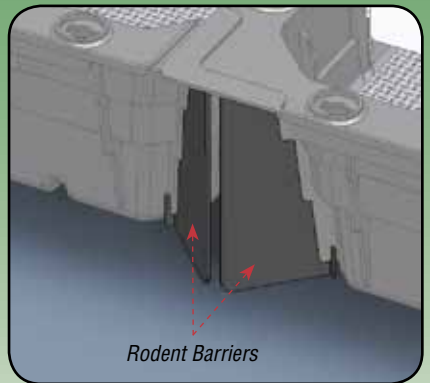
## Fast Installation & Removal

MEP® Tray units are placed onto a pre-installed drainage network. Trays are easily added or removed without affecting the drainage network.



## Rodent Barriers

Rodent Barriers at each corner of the MEP® Tray prevent rodents from infesting the space between trays.



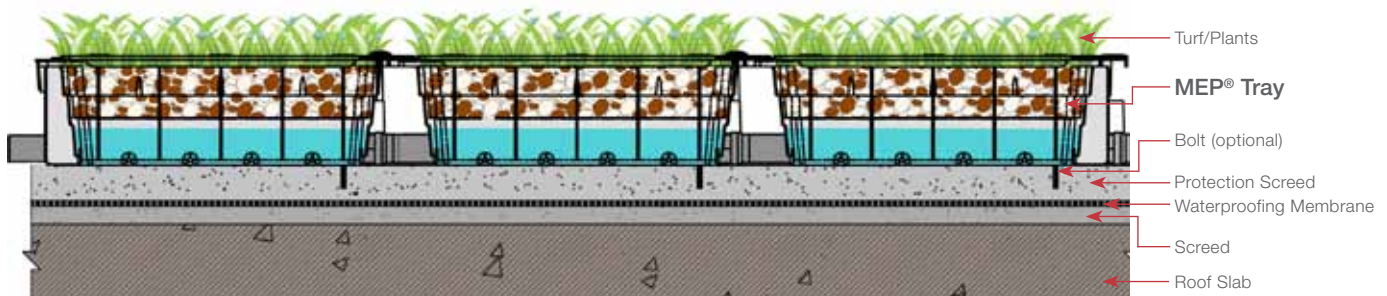
## Technical Specifications

Material	PP
Dimensions	500 mm x 500 mm x 150 mm
Planting media height	75 mm
Reservoir capacity	35.2 l/m <sup>2</sup>
<b>Weight</b>	
Empty	<10 kg/m <sup>2</sup>
Planted	~120 kg/m <sup>2</sup>

## Advantages

- Established green roof upon installation
- Modular, lightweight and portable
- Integrated capillary wicks
- Closed drainage system
- Watertight pipe and connector joints
- Non-clogging reservoir and drainage channels
- Spill-proof planting media containment
- Option to secure tray against uplift

## Typical Detail



## Projects



The Elmich security hologram ensures authenticity of the products.

**Distributed by:**

**Note:** The information provided in this brochure is based on current knowledge and experience and does not infer any legally binding assurance or warranty, expressed or implied. Intending purchasers should verify whether any changes to specifications or applications or otherwise have been made since the issue of this literature. Environmentally-friendly recycled materials are used in product manufacture wherever possible. Physical product properties including colour may differ due to source of raw materials used. Colour may also fade due to UV exposure. All components of the product are designed for specific application, design calculations and any variation and/or deviation therefrom shall be the responsibility of the specifier and/or user.



**ELMICH PTE LTD** [www.elmich.com](http://www.elmich.com)

Singapore: (+65) 6356 2800

info@elmich.com

Singapore | Australia | Germany | Malaysia | Switzerland | USA

